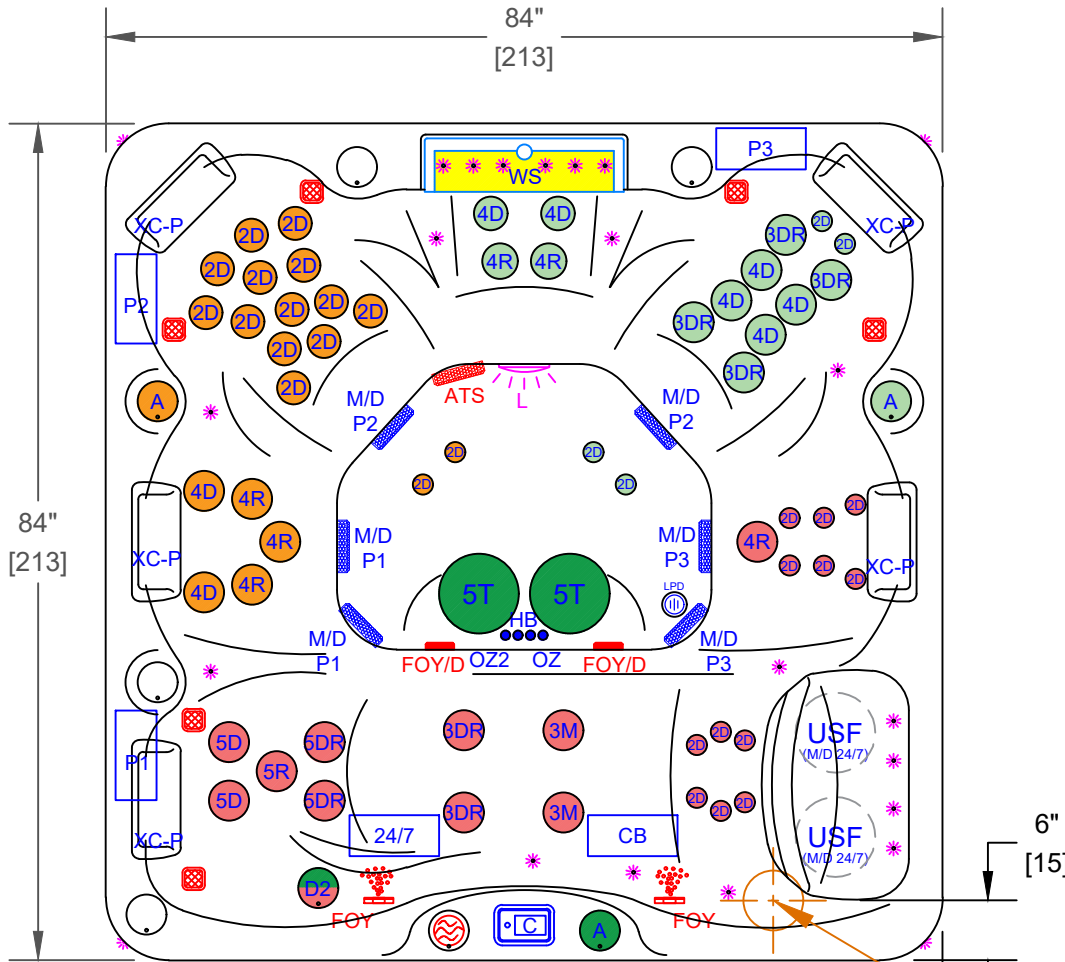
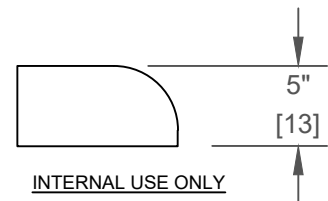


NOTES:  
 1. DUE TO OUR CONTINUOUS IMPROVEMENT PROGRAM, ALL MODELS AND SPECIFICATIONS ARE SUBJECT TO CHANGE WITHOUT NOTICE.



	PUMP 1
	PUMP 2
	PUMP 3
	PUMP 1
	PUMP 2
	PUMP 3
	PUMP 24/7
	CONTROL BOX

### PL-760L - LEGEND

SYMB.	DESCRIPTION	PART NUMBER	QTY.
2D	2" CLUSTER STORM DIRECTIONAL VECTOR X	PLUCS2440019S-HLG	31
3M	3" MINI STORM MASSAGE DIRECTIONAL VECTOR X	PLUCS2445059S-HLG	2
3DR	3" MINI STORM TWISTER VECTOR X	PLUCS2441049S-HLG	6
4D	4.5" POLY STORM DIRECTIONAL VECTOR X	PLUCS2446009SS-HLG	8
4R	4.5" POLY STORM ROTO VECTOR X	PLUCS2446039S-HLG	6
5D	5" POWER STORM DIRECTIONAL VECTOR X	PLUCS2447009SS-HLG	2
5DR	5" POWER STORM TWISTER VECTOR X	PLUCS2447049SS-HLG	3
5T	5" ADJUSTABLE WHIRLPOOL VECTOR X WITH VALVE	PLUCS2394029S-HLG	2
D2	ORION 2" WATER DIVERTER VALVE	PLUCS600-7609-CDHL	1
A	ORION AIR CONTROL VALVE	PLUCS660-7609-CDHL	4
WS	18" LED WATERFALL SPILLWAY W/ VALVE	675-5309-HLGL	1
USF	150 SQ. FT. ULTRA SKIM FILTER (2X 75 SQ. FT.)	517-4619LC-HLG	2
M/D	5" MAIN DRAIN 2"S	PLU644-5219-HLG V	6
XC-F	TEXTURED CASCADE PILLOW (WHITE)		5
C	TOUCH CONTROL+ 1000		1
OZ2	TWIN PURE SILK SYSTEM DIAL OZONATORS WITH MAZZIE INJECTORS AND MIXING CHAMBERS		1
-	PURE CURE UV PURIFICATION SYSTEM		1
LPD	LOW PROFILE DRAIN		1
P1, P2, P3	HIGH PERFORMANCE PUMP (6.0 BHP)		3
CB	CONTROL BOX WHISPER HOT™ HEATING SYSTEM		1
24/7	24/7 FILTRATION SYSTEM		1
	ELITE III SPOTLIGHT 4x CABINET CORNERS LED LIGHTING & STAINLESS STEEL ACCENTS		1
L	5" MULTI COLORED LED LIGHT		1
*	PERIMETER LED LIGHTING		1
-	EXTERIOR PERIMETER LED RAIL + LED CAL SPAS LOGO		1
-	FILTER COVER PLATINUM		1
-	CAL CONNECT RF MODULE		1
-	CAL GRIP (FLOOR & STEPS)		1

### OPTIONS

SYMB.	DESCRIPTION	OPTION NUMBER
-	CAL SPAS THROTTLE SEAT WITH VARIABLE SPEED PUMP	OPT25-108FLX
ATS	EXCLUSIVE ADJUSTABLE THERAPY SYSTEM WITH FLOOR JETS	OPT25-109
	CAL SPAS SALT SYSTEM	OPT25-113S
FOY	FOUNTAIN OF YOUTH SYSTEM	OPT25-FOY
-	BALBOA EQUIPMENT WITH XL HEATER BP501X w/TOUCH 4 TOPSIDE	OPT25-140BP-3
-	ABS MOLDED BOTTOM TRAY	OPT25-990-7
	FREEDOM SOUND SYSTEM BLUETOOTH, POWERED SUBWOOFER AND 8X SPEAKERS	OPT25-FS82
-	THERMO-GUARD FULL FOAM	OPT25-900

PROPRIETARY AND CONFIDENTIAL THE INFORMATION CONTAINED IN THIS DRAWING IS THE SOLE PROPERTY OF CAL SPAS. ANY REPRODUCTION IN PART OR AS A WHOLE WITHOUT THE WRITTEN PERMISSION OF CAL SPAS IS PROHIBITED.		 CAL SPAS INC. 1442 EAST NINTH STREET, POMONA, CA 91766	
SPECIFICATIONS		TITLE	JET LAYOUT - 113S
DIMENSION (in)	84"x84"x40-1/2"	LINE	PLATINUM
DIMENSION (cm)	213x213x100	MODEL	2025 SPA LINE HUNTINGTON
DRY WEIGHT	850 LBS [386 Kg]	NUM	PL-760L
FILLED WEIGHT	4390 LBS [1991 Kg]	DWG NO.	CS003356
WATER CAP.	425 GAL [1609 L]	SCALE	NTS
		REV	A
		SHEET 1 OF 1	